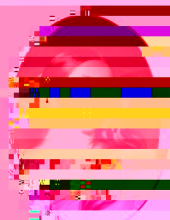


The largest residence of Queen Victoria who granted the Royal Charter in 1841.



Queen's Jubilee

Math Quest is

and dinners to be enjoyed at different locations across campus.

These programs run from 9:30 am until

12:30 pm on the following dates:

• Friday, September 14th
• Friday, September 21st

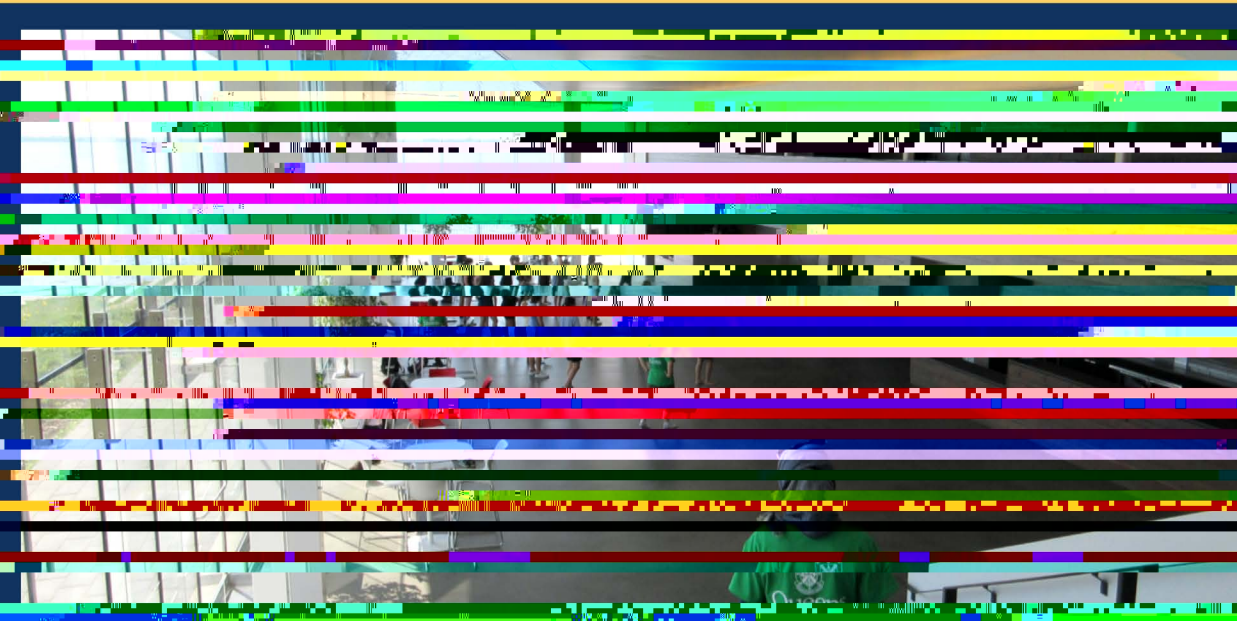
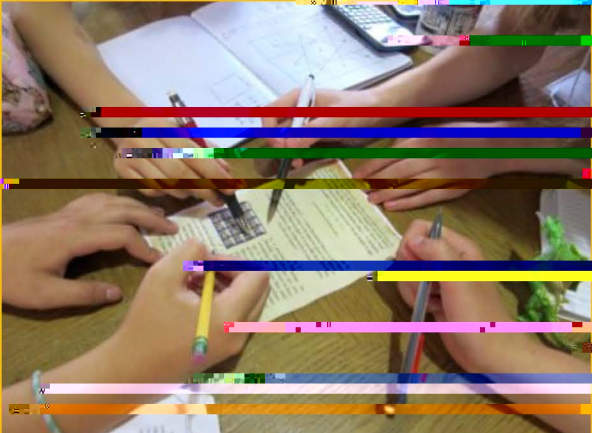
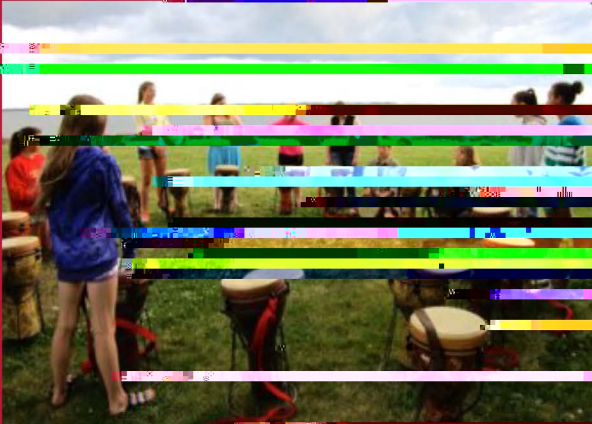
For more information, please contact

the Office of Student Activities at 508-548-5400 or visit our website at www.queens.edu/student-activities.



QUEEN'S UNIVERSITY

Queen's University is a leading research university with a strong tradition in science, where we have curiosity for algebra, cryptography, graph theory, physics, and quantum computing. We are looking for students who are passionate about mathematics and want to explore the frontiers of knowledge. Join our vibrant community of students and faculty members who are dedicated to excellence in education and research.



INVITATION FOR ALL GRADES OF THE SIREN

Puzzles, games, and outdoor activities, in Jeffrey Hall's math centre, in the Integrated Learning Centre's computer lab or in the arboretum. We invite you to spend some time on Queen's campus.

conferences, a break, design, adventurous side of math.

the Canadian Mathematical Society

Queen's University
mathemat

