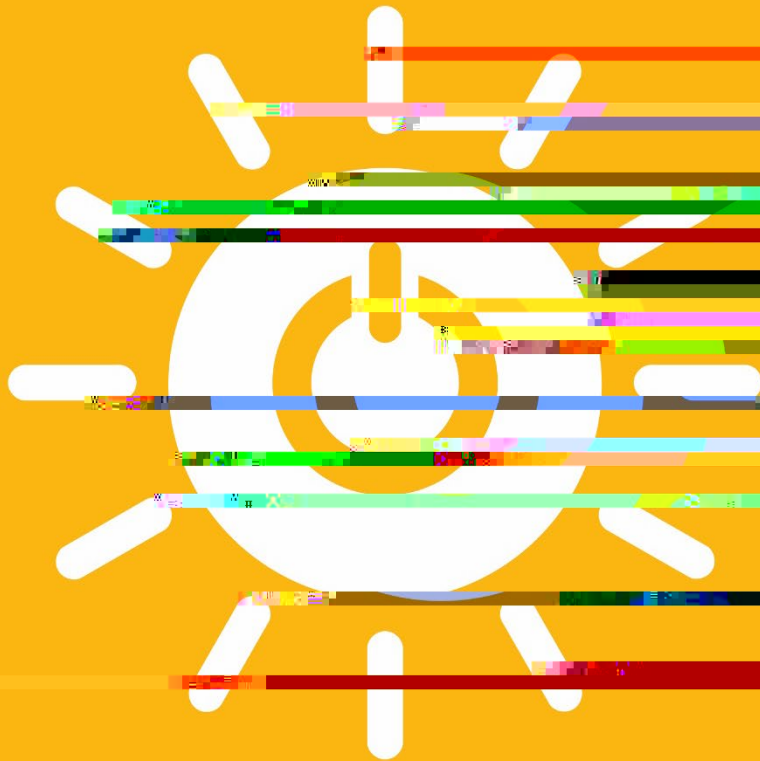


7 AFFORDABLE CLEAN ENERGY



Moderation Team
Kayla Dettinger
Warren Mabee
Suraj Persaud

Action Summary

Room 7 brought together 17 individuals from across Queen's University to discuss approaches to addressing SDG 7. The group identified one central area for action.

Action: Establish an Energy Hub at Queen's University with a mandate to advance research, teaching, and engagement.

Action Description

Guided by the university's [strategic framework](#) and the [targets for SDG 7](#), we recommend the establishment of an Energy Hub housed at Queen's. The Hub's focus on research, teaching, and engagement reflects their interdependence and provides a structure for Queen's to make meaningful advances in these areas.

Critical to the Hub are community and stewardship, recognizing that partnerships and collaborations are key to success and that impact and innovation in clean energy can be had at all levels, including on Queen's campuses and properties. The Hub would have many stakeholders and interested parties, but within the Queen's community it would support core collaborations between faculty, staff, students, and alumni.

Research

Establishing the Hub will support collaboration among researchers at Queen's and at partner institutions, leveraging their unique expertise and providing a bridge for established research centres, institutes, labs, and groups to work together in addressing the multi-faceted components of SDG 7.

Teaching

The Hub would undergo a comprehensive review and assessment of all existing energy-related curriculum with a goal to identify opportunities to develop new courses, micro-credentials, certificates, specializations, professional education, mentorship, and experiential learning programs with a multi-disciplinary and inclusive lens on SDG 7, enhancing student learning and equipping them to implement change as alumni.

Engagement

Bringing together and communicating with researchers, community partners, industry, and institutions will champion subject-matter expertise, raise public awareness, create experiential learning opportunities, reframe curriculum and professional development, and mobilize innovation for real-world implementation as part of a community of practice in Eastern Ontario working towards global impact.

Resources Required

Partnerships and multi-disciplinary collaborations.

Within Queen's

Researchers and faculty across the university are currently working and teaching in areas relevant to affordable and clean energy. Students and staff are also exploring and advancing

Youth , are central to not only Queen's but Canada's success in

[Dunin -Deshpande Queen's Innovation Centre](#), etc.) through spin - offs, patents, future Superclusters, etc.

Global

Working with our existing international associations and building new partnerships would expand the Queen's Energy Hub's global impact. Starting with opportunities at the Bader International Study Centre (BISC), understanding how an Energy Hub could contribute to global partnerships and position Canadian expertise among groups such as the [Matariki Network of Universities \(MNU\)](#), [Association of Commonwealth Universities \(ACU\)](#), [Association of Public and Land- grant Universities \(APLU\)](#),